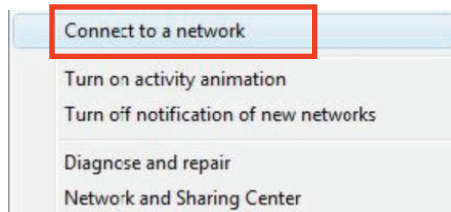
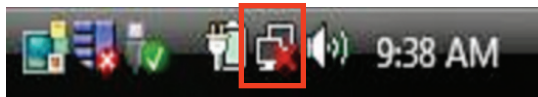


## Configuring Your Computer for UAWiFi

Windows Vista Edition | 2009–2010

UAWiFi is your best wireless choice on campus for both speed and security.

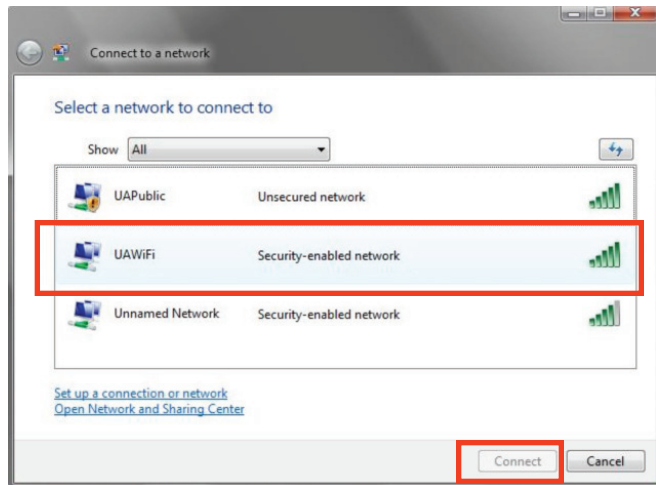
1. Right-click on the Network Manager icon, located in the taskbar. Then select "Connect to a Network" from the menu that appears.



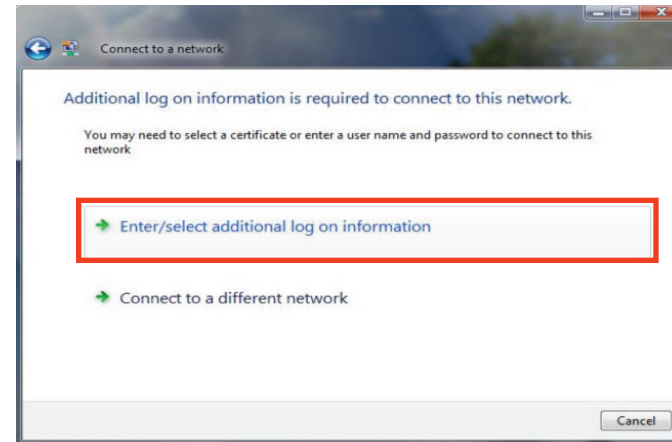
## Configuring Your Computer for UAWiFi

Windows Vista Edition | 2009–2010

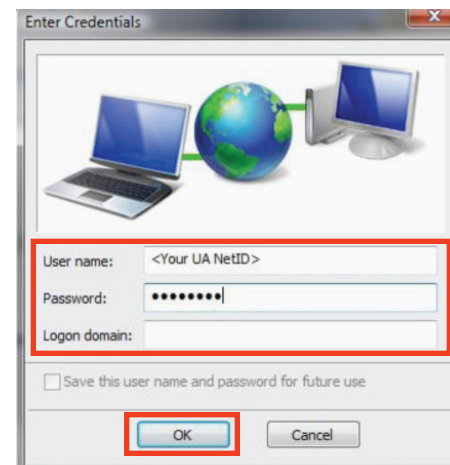
**2.** You should now see a list of available wireless networks. Select UAWiFi from the list and click on "Connect". **If you do not see UAWiFi the wireless connection is not available from your location.**



**3.** Vista will now ask for additional information in order to connect to UAWiFi. Click on "Enter/select additional log on information".

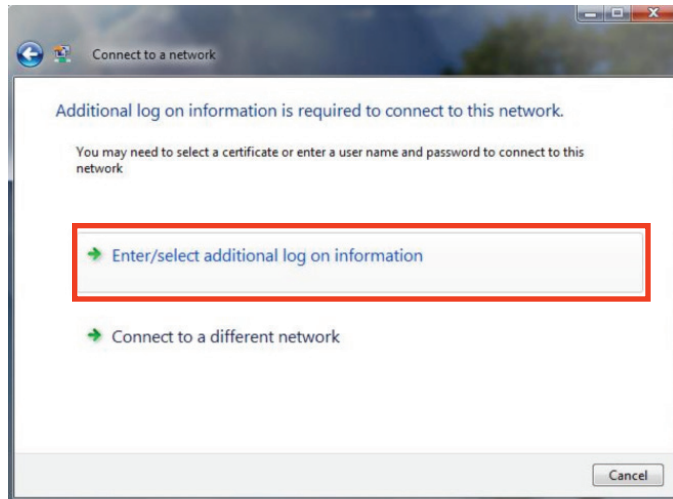


**4.** A screen should now pop up asking you for your credentials. Simply enter in your NetID under the "User name" field. Similarly, use your NetID password for the "Password" field. Leave the "Logon domain" field blank. Hit "OK" once you have typed in your information.

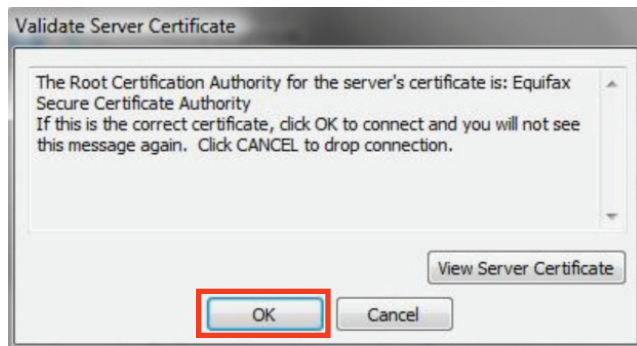


## Configuring Your Computer for UAWiFi

**5.** Vista will again ask you for additional information. As before, click on "Enter/select additional log on information".



**6.** This time a screen will pop up asking you to verify UAWiFi's security certificate. Simply click "OK".



**7.** You should now be connected to UAWiFi. Make sure the "Save this network" box is checked. Check the "Start this connection automatically" box if you would like Vista to automatically connect to UAWiFi when it is in range. Hit "Close" when you're done.

